

iGRICULTURE

MANAGEMENT SYSTEM
FOR AGRICULTURE 4.0

Description

- iGriculture is an innovative management software for Small/Medium Farms.
- It has been designed to provide entrepreneurs, cooperatives, agronomists, and all operators in the sector with a cultivation activities and financial analysis management tool.

Main features

- CULTIVATION ACTIVITIES MANAGEMENT
- CROP MONITORING
- FINANCIAL MANAGEMENT





CULTIVATION ACTIVITIES MANAGEMENT

Land Management

LandManagement of data relating to land and details of plots

- It is possible to organize the plots on which to carry out cultivation activities. For each land, it is possible to enter the geographical information, the type of management, the name of the owner and the cadastral data (total cadastral area in hectares, sheet and parcel).
- Through the satellite maps it is possible to monitor the field lots present in the soil, filtering them by agricultural year.



Nuovo lotto di campo

← INDIETRO Save

Campo Coltivazione

Nome lotto di campo
Assegna un nome o un identificativo univoco*
Lotto C

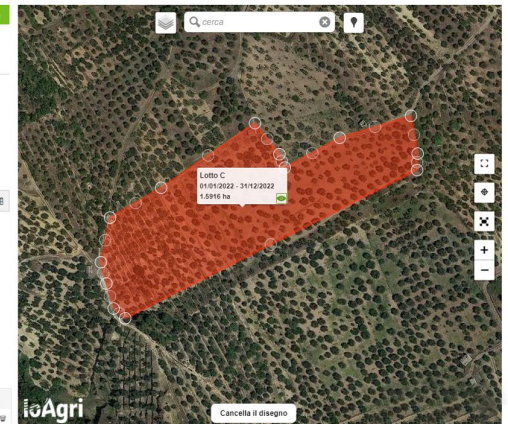
Coltura coltivata
Scegli una varietà coltivata*
Mandorlo - Tuono

Annata agricola
Inizio stagione* 01/01/2022
Fine stagione* 31/12/2022
Aperta

Terreno di appartenenza
Scegli il terreno dove è situato il lotto*
03 - Pennino
Area catastale terreno
Totale: 1,0649 Ha
Occupato: 2,1298 Ha

Particelle catastali
Foglio: 1 Particella: 4
+ Aggiungi o modifica particelle

Area (Ha)	Area Grad. (Ha)	Area Cst. (Ha)	Sez.	Foglio	Part.	Sub.	Par.
0.119	0.119	0.119		124	130		





CULTIVATION ACTIVITIES MANAGEMENT

Cultural activities

Management of the cultivation activities carried out in each lot of the field

- It is possible to enter information regarding the interventions carried out in each field. The system provides a real-time overview of treatments, fertilizations and all the operations carried out.
- Functionality of printing the treatment register and campaign notebook compliant with regulations.

Multilot

Registration of a cultivation activity to be carried out on multiple field lots

- The multilot module was developed specifically to meet a rather common need in the agricultural sector, namely that of associating a cultivation activity with different plots of fields.



CULTIVATION ACTIVITIES MANAGEMENT

Machines and tools

Monitoring of the machinery used

- The system records the data of the machinery used during cultivation activities (type, date of purchase, serial number, hours and kilometers of work carried out, etc ...).

Scheduled cultivation activities

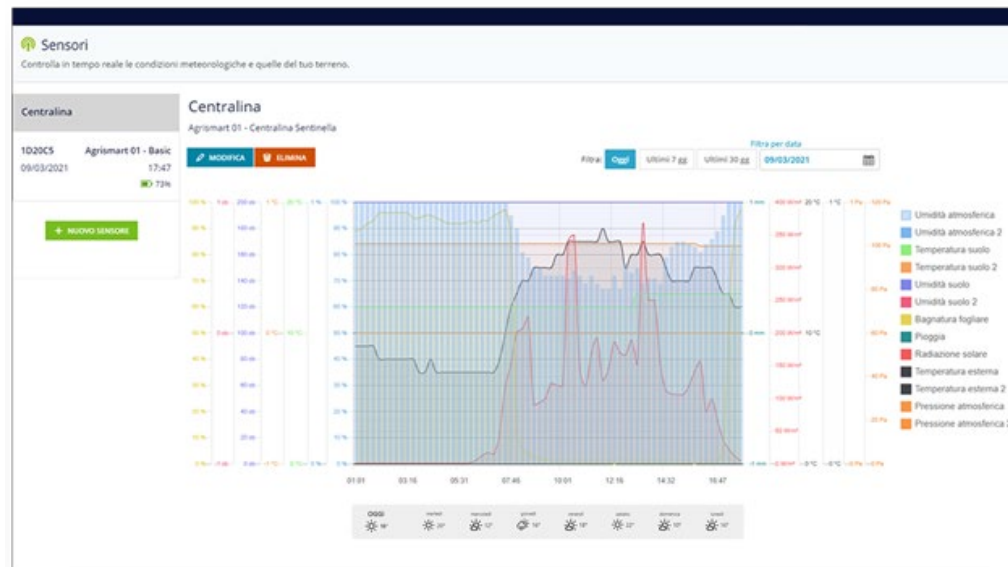
Advance planning of cultivation activities

- This feature allows you to plan in advance the activities to be carried out on the crops. In this way it is possible to organize the work of each worker, informing him with a notification of the cultivation operations to be carried out in the field.
- At the end of each activity, it is possible to mark it as “done”, through mobile devices.

CROP MONITORING

Land mapping and monitoring

- The satellite view of the field lots guarantees a clear and complete overview of the production units. Satellite views obtained through the use of drones can be associated with each field lot to process information extracted through photogrammetry.
- The system offers a monitoring console for the most important data from sensors installed on the land and from weather services to monitor the progress of climatic conditions and land.





FINANCIAL MANAGEMENT

Purchases and business expenses

Storage of purchases and expenses incurred in your company

- Registration of all purchase invoices, tool maintenance costs, rents, expenses incurred, assigning a category for each type of expense. In this way it is possible to always have under control all the economic movements carried out by the company.

Automatic loading and unloading of warehouse

Check stock availability in real time

- Warehouse management in a fully automated way. The loading and unloading of products from each warehouse takes place in real time whenever a cultivation activity or a purchase or sale invoice is recorded. This feature ensures optimization of resources and a complete view of the stock of each product in the warehouse at the time of use.

Fuel management

Management of refueling operations carried out on machinery

- For each machinery or agricultural tool used, it is possible to record the refueling carried out and view the refueling history. In addition, by indicating the quantity loaded and the date on which the refueling was carried out, it is possible to calculate in real time the actual availability of the fuel loaded in the respective warehouse or tank.



FINANCIAL MANAGEMENT

Purchases and business expenses

Record and track purchases and expenses incurred

- Registration of invoices for the purchase of products, the costs of maintenance and restocking of tools, rents and any other expenses incurred by your farm.

Workers and working hours

Time and cost monitoring of the activities carried out by employees

- Data management and employee records, qualifications and licenses.
- Display of the number of hours worked by each employee and the related labor costs.
- Detailed dashboard of the performance of each employee to support the organization of the activities to be carried out on the field lots, improving the control of the working processes.

Actors / Stakeholder

Actors

- Small / Medium Farms Industries
- Farmer

StakeHolder

- Government Economic board
- Research Institutes